

TelQA Test

A fast, efficient and powerful tool for testing the performance of web based applications

TelQA Test is the ideal load and stress testing tool for:

- Development testing
 - Scalability testing
 - Customer acceptance testing
 - Service level agreements
-

Main Features

- Intuitive user interface
 - Capture facilities
 - Choice of scripting (SmartScripts, C# or VB.NET)
 - Comprehensive editors for script and test development
 - Report generation
 - Distributed test facilities
-

TelQA Test is a performance testing tool that allows both testers and software developers to find and identify the cause of performance bottlenecks in websites and web based applications. With a range of facilities to quickly create and deploy automated performance tests and options to suit a wide range of performance testing requirements, TelQA Test provides a cost effective solution for performance testing websites and web based applications for both small businesses and large corporations.

With TelQA Test you can:

- Capture, create and edit user interactions as scripts using either TelQA SmartScripts or TelQA CodeScripts
- Model the captured scripts as virtual users (VUs) in our comprehensive script editors
- Collect performance data using Microsoft Performance Counters or SNMP
- Create tests using the TelQA Test Wizard
- Monitor running tests through the TelQA Test user interface
- Generate detailed test reports

Powerful Integrated User Interface

TelQA Test combines test creation, management, execution and analysis within a single intuitive User Interface (UI). This approach allows the development and execution of performance tests to be carried out as a sequence of easy to manage steps. Test specific data is easily accessible through lists and property panels which provide an uncomplicated view of even the most complex tests.



Fast and Efficient Test Development

Creating a performance test with TelQA Test is simple and easy:

- Use the integrated TelQA Recorder to capture the user interactions between a browser and the target HTTP based application
- Save the captured interactions as a "script"
- Modify the captured script to allow it to be replayed as a Virtual User (VU)
- Create a test which replays a number of VUs, each of which behaves as an independent user
- Run the test whilst collecting any relevant performance data from the system under test
- Analyse the results

Easy Script Recording and Modelling

Recording Scripts

The TelQA Recorder allows you to focus on the test by keeping the recording stage as simple as possible. Just select the browser type, interact with the target application as a normal user, then close the recorder to save the script to the TelQA Repository.

TelQA Test allows users to capture, create or edit scripts using either TelQA SmartScripts or TelQA CodeScripts. Designed for use by all levels of testers, TelQA SmartScripts provide an intuitive and efficient method of scripting without the need for programming skills. TelQA CodeScripts provide full scripting functionality using the native .NET coding languages, C# and VB.NET.

Manual Script Creation

For specific applications where the HTTP interactions cannot be directly captured, TelQA Test provides facilities for the manual creation of SmartScript or CodeScript (C# or VB.NET) based VUs.

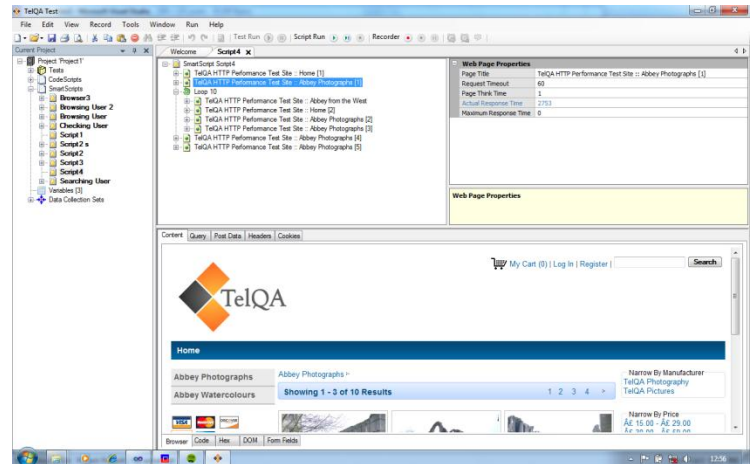


Figure 1: TelQA Test SmartScript Editor

Script Modelling

Modifying, or modelling, captured scripts to form VUs is the key to developing automated performance tests. TelQA Test offers comprehensive editors for both TelQA SmartScripts and TelQA codeScripts. The SmartScript editor provides an easy to use script modelling solution for testers with little or no programming experience. The CodeScript editor provides powerful programming functionality such as intellisense and outlining. TelQA scripts are compiled using the Microsoft .NET compiler allowing you to re-use code from your existing .NET applications.

Extensive Data Performance Collection

TelQA Test provides integrated facilities for collecting performance data using Microsoft Performance Counters and SNMP.

Test Creation and Editing

Test Development

Once you have recorded and modelled one or more scripts, the TelQA Test UI lets you create tests in seconds using our Test Wizard. If you prefer to create your test manually, TelQA Test allows access to all test related properties using the latest .NET controls.

Whichever method you choose, developing tests in TelQA products is always simple and intuitive.

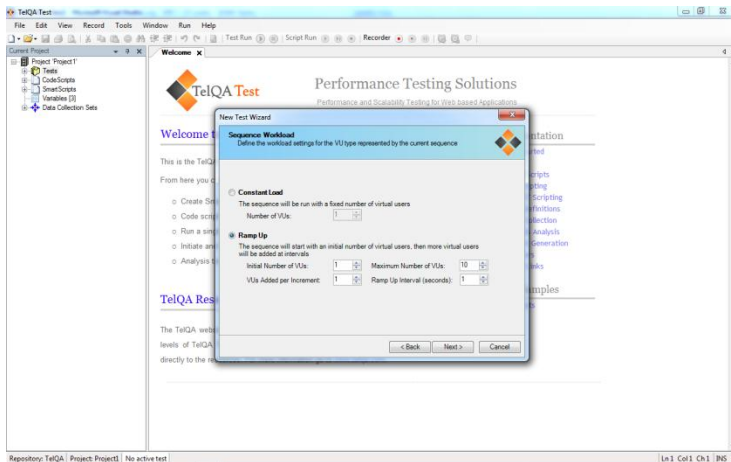


Figure 2: TelQA Test Wizard

Distributed Tests

TelQA Test provides facilities for distributing the replay of VUs among a number of host machines. Each selected machine runs a TelQA "Agent" which communicates with the host running the TelQA Test UI.

To create a distributed test simply create the test as normal and then select the host machines and the number of VUs to run on each host.

Test Execution and Monitoring

Running Tests

Tests are controlled through the TelQA Test UI. Once a test is running the TelQA Test UI can be closed. Details of a currently active test are available if the TelQA Test UI is restarted during the test run.

Monitoring Tests

The status of a currently running test is always available within the TelQA Test UI. If additional data is required, TelQA Test includes monitoring facilities which offer a combination of charts and tabular information.

Results Analysis and Reporting

Results Analysis

TelQA Test can be configured to collect and present a wide range of test run results data. Users can select from processed HTTP related data such as Pages Per Second through to details of each individual HTTP request. In addition to the HTTP specific data, test run results will also contain data for any performance related data collection specified by the user.

Each result category can be viewed as a chart or as tabular information. Individual results sets can be exported in CSV format.

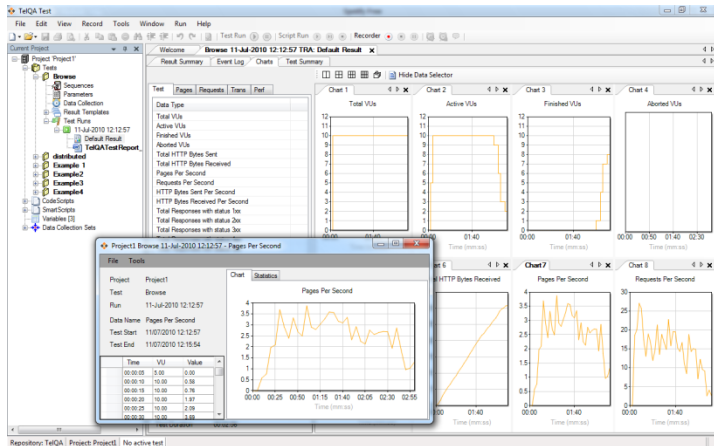


Figure 3: TelQA Results Analysis

TelQA Reports

TelQA Test generates reports in Microsoft Word 2007 (.docx) format. Each report contains a test summary along with details of any transactions (user configurable timers applied to groups of pages) or page timers. The report also contains a chart and statistical information for a user configurable selection of data types.

Test Data Storage - TelQA Test Repositories

Test related data and results are stored within dedicated TelQA Test repositories which are accessed via the TelQA Test UI. Users can create multiple repositories from which they can select any individual repository as the active data source.

Platform Requirements

TelQA Test is available for the following Microsoft platforms:

- Windows XP Professional SP2+
- Windows Vista Professional +
- Windows 7 Professional +
- Windows Server2003 SP2+
- Windows Server 2008

TelQA Test also requires Microsoft .NET Framework v4.0. This is installed as part of the TelQA installation process.

TelQA Test requires a minimum of 100MB of disk space. It is also advisable to have a minimum of 2GB of RAM.

TelQA Ltd

Postal Address

TelQA Limited
Hammerton Lodge
Kirk Hammerton
York
YO26 8DS

Sales Enquiries

Tel: +44(0)1282 859553
email: sales@telqa.com

Support

Tel: +44(0)1282 859553
email: support@telqa.com

www.telqa.com

