

TelQA Test Lite

A fast, efficient and powerful tool for testing the performance of web based applications

TelQA Test Lite is the ideal load and stress testing tool for:

- Development testing
 - Scalability testing
 - Customer acceptance testing
 - Service level agreements
-

Main Features

- Intuitive user interface
 - Capture facilities
 - SmartScript scripting
 - Comprehensive editors for script and test development
 - Report generation
-

TelQA Test Lite is a Microsoft Windows .NET based testing product which provides a fast, efficient and powerful means of testing the performance of web based applications. Whether your requirements are for a simple ten user test, or for a complex interactive test employing up to 50 simulated users, TelQA Test Lite offers a range of features to provide fast and efficient performance testing.

With TelQA Test Lite you can:

- Capture, create and edit user interactions as scripts using TelQA SmartScripts
- Model the captured scripts as virtual users (VUs) in our comprehensive script editors
- Collect performance data using Microsoft Performance Counters or SNMP
- Create tests using the TelQA Test Wizard
- Monitor running tests through the TelQA Test user interface
- Generate detailed test reports

Powerful Integrated User Interface

TelQA Test Lite combines test creation, management, execution and analysis within a single intuitive User Interface (UI). This approach allows the development and execution of performance tests to be carried out as a sequence of easy to manage steps. Test specific data is easily accessible through lists and property panels which provide an uncomplicated view of even the most complex tests.



Fast and Efficient Test Development

Creating a performance test with TelQA Test Lite is simple and easy:

- Use the integrated TelQA Recorder to capture the user interactions between a browser and the target HTTP based application
- Save the captured interactions as a "script"
- Modify the captured script to allow it to be replayed as a Virtual User (VU)
- Create a test which replays a number of VUs, each of which behaves as an independent user
- Run the test whilst collecting any relevant performance data from the system under test
- Analyse the results

Easy Script Recording and Modelling

Recording Scripts

The TelQA Recorder allows you to focus on the test by keeping the recording stage as simple as possible. Just select the browser type, interact with the target application as a normal user, then close the recorder to save the script to the TelQA Repository.

TelQA Test Lite allows users to capture, create or edit scripts using TelQA SmartScripts. Designed for use by all levels of testers, TelQA SmartScripts provide an intuitive and efficient method of scripting without the need for programming skills.

Manual Script Creation

For specific applications where the HTTP interactions cannot be directly captured, TelQA Test Lite provides facilities for the manual creation of SmartScripts.

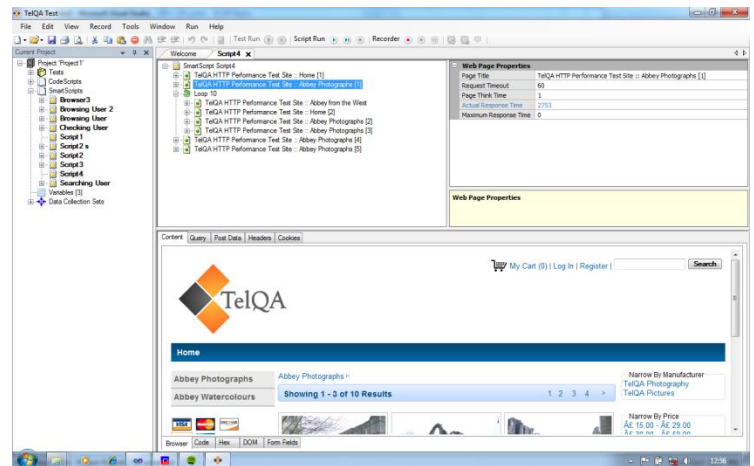


Figure 1: TelQA Test SmartScript Editor

Script Modelling

Modifying, or modelling, captured scripts to form VUs is the key to developing automated performance tests. TelQA Test Lite offers comprehensive editing facilities for TelQA SmartScripts. The SmartScript editor provides an easy to use script modelling solution for testers with little or no programming experience.

Extensive Data Performance Collection

TelQA Test Lite provides integrated facilities for collecting performance data using Microsoft Performance Counters and SNMP.

Test Creation and Editing

Test Development

Once you have recorded and modelled one or more scripts, the TelQA Test Lite UI lets you create tests in seconds using our Test Wizard. If you prefer to create your test manually, TelQA Test Lite allows access to all test related properties using the latest .NET controls.

Monitoring Tests

The status of a currently running test is always available within the TelQA Test Lite UI. If additional data is required, TelQA Test Lite includes monitoring facilities which offer a combination of charts and tabular information.

Results Analysis and Reporting

Results Analysis

TelQA Test Lite can be configured to collect and present a wide range of test run results data. Users can select from processed HTTP related data such as Pages Per Second through to details of each individual HTTP request. In addition to the HTTP specific data, test run results will also contain data for any performance related data collection specified by the user.

Each result category can be viewed as a chart or as tabular information. Individual results sets can be exported in CSV format.

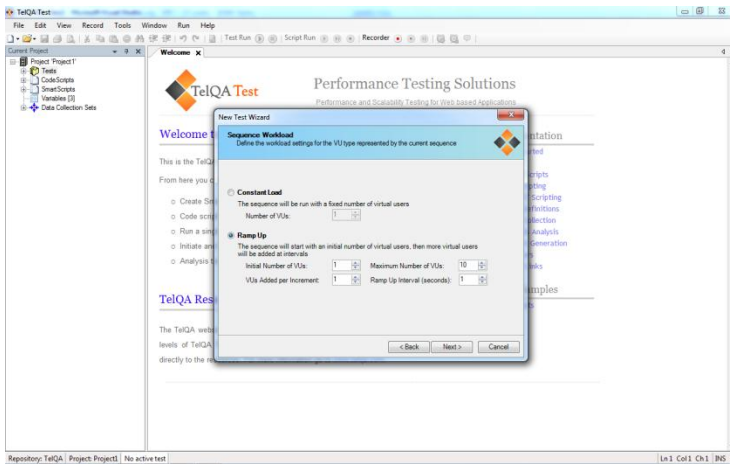


Figure 2: TelQA Test Wizard

Whichever method you choose, developing tests in TelQA products is always simple and intuitive.

Test Execution and Monitoring

Running Tests

Tests are controlled through the TelQA Test Lite UI. Once a test is running the TelQA Test Lite UI can be closed. Details of a currently active test are available if the TelQA Test Lite UI is restarted during the test run.

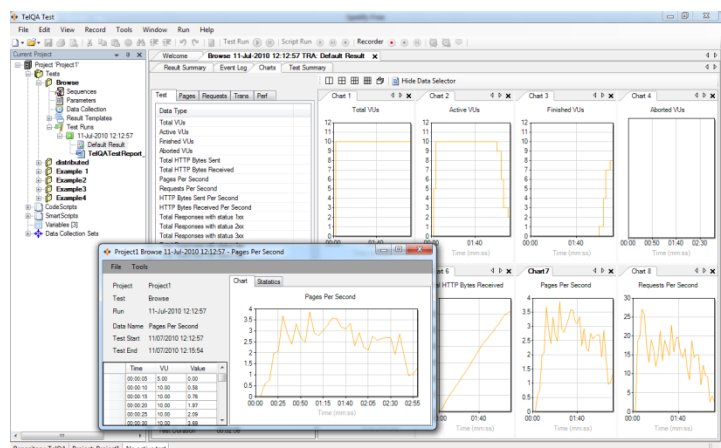


Figure 3: TelQA Results Analysis

TelQA Reports

TelQA Test Lite generates reports in Microsoft Word 2007 (.docx) format. Each report contains a test summary along with details of any transactions (user configurable timers applied to groups of pages) or page timers. The report also contains a chart and statistical information for a user configurable selection of data types.

Test Data Storage - TelQA Test Repositories

Test related data and results are stored within dedicated TelQA Test repositories which are accessed via the TelQA Test Lite UI. Users can create multiple repositories from which they can select any individual repository as the active data source.

Platform Requirements

TelQA Test Lite is available for the following Microsoft platforms:

- Windows XP Professional SP2+
- Windows Vista Professional +
- Windows 7 Professional +
- Windows Server2003 SP2+
- Windows Server 2008

TelQA Test Lite also requires Microsoft .NET Framework v4.0. This is installed as part of the TelQA installation process.

TelQA Test Lite requires a minimum of 100MB of disk space. It is also advisable to have a minimum of 2GB of RAM.

TelQA Ltd

Postal Address

TelQA Limited
Hammerton Lodge
Kirk Hammerton
York
YO26 8DS

Sales Enquiries

Tel: +44(0)1282 859553
email: sales@telqa.com

Support

Tel: +44(0)1282 859553
email: support@telqa.com

www.telqa.com

